

EMPOWER YOUR CAREER

DIGITAL SKILLS TRAINING

PROGRAMMING

CYBERSECURITY

CLOUD

LINUX

CLOUD MICROSOFT

DEVNET

NETWORKS

Boost your digital skills
with our training program,
'Digital Skills Training:
Empower Your Career'.



CHAMBRE DES SALARIÉS
LUXEMBOURG
YOU'LL NEVER *WORK* ALONE.



LUXEMBOURG LIFELONG
LEARNING CENTRE
LA FORMATION CONTINUE DE LA CHAMBRE DES SALARIÉS

TRAINING MODULES

1



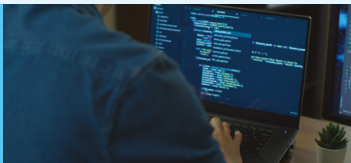
Mastering Modern Network Technologies: CCNA

2



Cybersecurity Mastery: Safeguarding the Digital Landscape

3



Linux Cloud Management in the Digital Era

4



Cloud Computing Mastery: Harnessing the Power of Cloud Services

INTRODUCTION

This program is designed for individuals in various roles seeking to enhance their digital expertise, whether they are exploring the digital domain, seeking employment, working in a digital or IT operational area, or simply wanting to keep their skills up-to-date.

In today's rapidly evolving digital landscape, companies across all industries require employees who can effectively operate, promote, and communicate online. Our 'Digital Skills Training' program, tailored to meet the current job market needs, supports this transition towards developing essential digital skills.

Our 'Digital Skills Training' consists of seven training paths, allowing you to acquire valuable digital skills in the following areas : creating and sharing digital content, addressing technical and commercial challenges in various fields, such as Cloud, Cybersecurity and Networks.

No matter which training path you choose, you will be better equipped to advance your career, update existing skills, or develop new capabilities for your professional and personal life.

Enrol in our 'Digital Skills Training' and embrace the digital revolution with confidence.

REQUIREMENTS

These courses (training modules) are delivered in a blended learning format. They will allow you to develop the skills to meet the existing needs in the industry with certified instructors in a professional lab equipped with servers, routers, cabling, etc. as well as online classes and labs incorporating virtualization and network simulation tools.

The course format allows you to apply theoretical concepts directly to real-life situations.

With these new digital skills, you will be able to progress within your position or seize new career opportunities in the increasingly technology-driven job market in Luxembourg.

All courses are held in English and are open for registration on **LLLC.lu**



You can enrol in a complete training path or a specific module. If you already have some knowledge in the chosen area you may take a test allowing you to directly access the intermediate or advanced level courses or you may provide proof of the successful completion of equivalent courses.

5



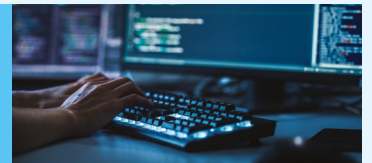
Mastering Microsoft Cloud Services: Azure & Microsoft 365

6



DevNet & Network Mastery: A Comprehensive Path to Infrastructure Automation & Software Development

7



Programming Foundations: JavaScript & Python for a Thriving Tech Career



CHAMBRE DES SALARIÉS
LUXEMBOURG
YOU'LL NEVER WORK ALONE



LUXEMBOURG LIFELONG
LEARNING CENTRE
LA FORMATION CONTINUE DE LA CHAMBRE DES SALARIÉS

A necessary institution to defend employees' interests

The Chamber of employees (Chambre des salariés, CSL), which was constituted as a result of the introduction of the unique status has more than 600.000 adherents. It plays a major role in the consultation process regarding national legislative procedures. Its opinion is required on all bills in relation with its adherents before the final vote in the Parliament.

The CSL publishes documentation on legal issues regarding labour law, social security law as well as viewpoints and opinions on economic and social topics. It also organises public conferences with relation to the work environment.

The CSL appoints the employee and retiree representatives who sit within the Caisse nationale de santé (National Health System), the Assurance pension (retirement insurance), the labour court and the social security jurisdictions.

Continuing education for adults is one of the main activities of the CSL.

The Luxembourg Lifelong Learning Centre (LLLC), the continuing education centre of the CSL, proposes a large panel of evening courses, seminars, university degrees, specialised training courses and professional certifications.

The LLLC facilities are located in the heart of Bonnevoie, ideally connected to the public transport network and in close proximity to the central station. It is not only a training space, but also a lively place of exchange which can host working meetings, conferences as well as cultural gatherings in the best conditions.

With more than 12 000 enrollments per year, the LLLC is positioned as one of the largest providers of continuing education for adults in Luxembourg. It offers employees a wide range of competitively priced training courses leading to recognized diplomas and certifications.

The Offer

Evening courses / Seminars / Diploma of Access to University Studies / Literary option (DAEU-A) / University and higher education courses / Specialized training / Training courses for senior citizens / Certifications



Luxembourg Lifelong Learning Centre
2 - 4, rue Pierre Hentges, L-1726 Luxembourg
M. formation@lllc.lu | T. +352 27 494 600